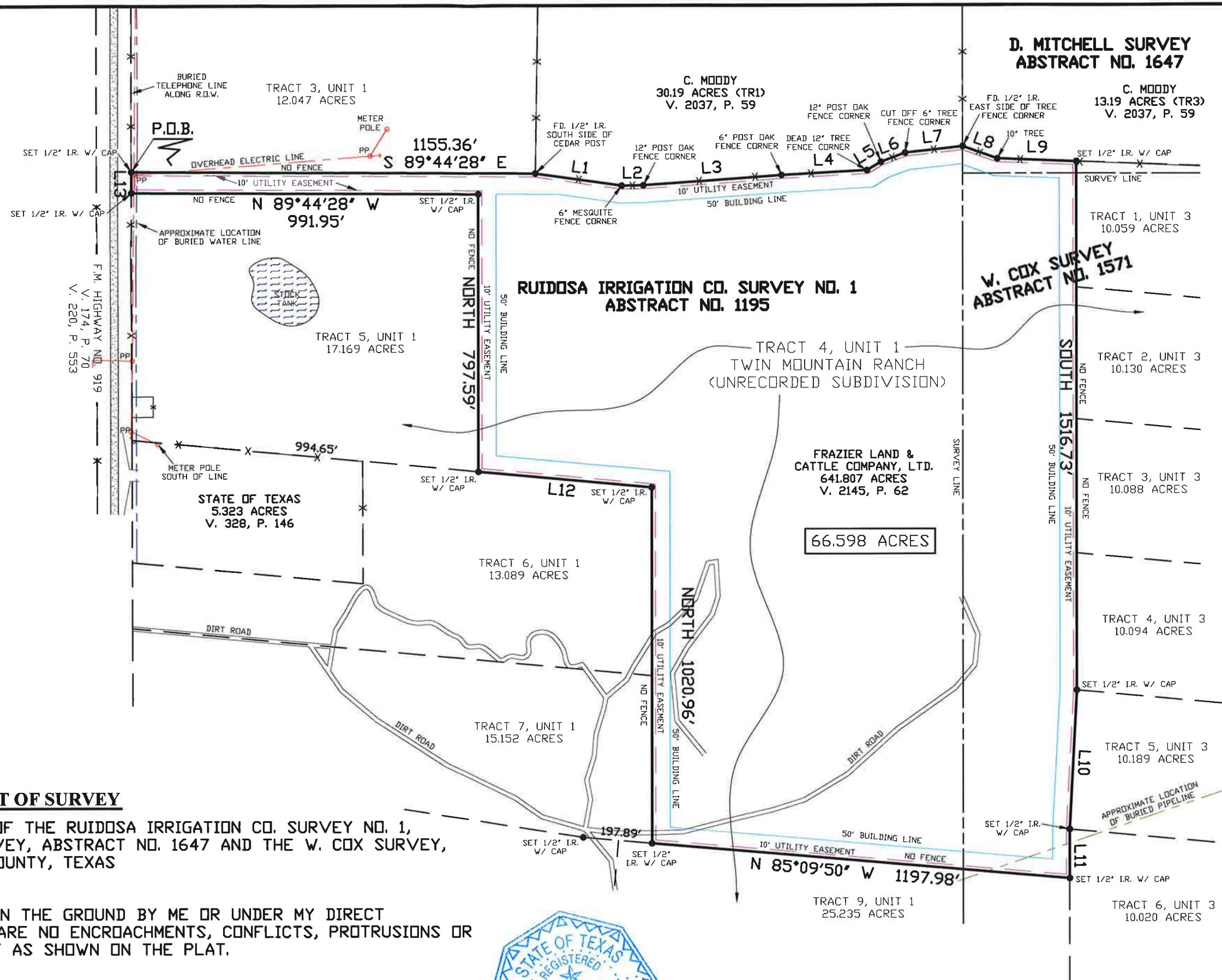


BEARING BASIS IS GEODETIC NORTH

NOTE: THIS TRACT IS NOT IN A FLOOD ZONE ACCORDING TO F.I.R.M. MAP NO. 48363C0550E, DATED AUGUST 2, 2012

LINE	BEARING	DISTANCE
L1	S 81°49'34" E	249.31'
L2	N 89°01'39" E	61.74'
L3	N 85°50'57" E	396.50'
L4	N 86°52'55" E	244.60'
L5	N 58°53'02" E	46.20'
L6	N 69°41'27" E	73.95'
L7	N 83°40'25" E	165.49'
L8	S 70°26'55" E	105.37'
L9	S 87°56'17" E	225.84'
L10	S 03°00'52" W	399.60'
L11	SOUTH	140.44'
L12	N 84°45'39" W	497.29'
L13	N 00°02'13" W	60.00'



PLAT OF SURVEY

OF A 66,598 ACRES TRACT OF LAND OUT OF THE RUIDOSA IRRIGATION CO. SURVEY NO. 1, ABSTRACT NO. 1195, THE D. MITCHELL SURVEY, ABSTRACT NO. 1647 AND THE W. COX SURVEY, ABSTRACT NO. 1571, ALL IN PALO PINTO COUNTY, TEXAS

THIS PLAT REPRESENTS A SURVEY MADE ON THE GROUND BY ME OR UNDER MY DIRECT SUPERVISION ON AUGUST 13, 2016. THERE ARE NO ENCROACHMENTS, CONFLICTS, PROTRUSIONS OR VISIBLE OR APPARENT EASEMENTS, EXCEPT AS SHOWN ON THE PLAT.

Michael Price

MICHAEL PRICE, REGISTERED PROFESSIONAL LAND SURVEYOR NO. 5492
 PRICE SURVEYING, LP, FIRM #10034200, 213 S OAK AVE, MINERAL WELLS, TX 76067
 940-325-4841 JN16508 16093.crd 16508D-R1.dwg FN171109

